



## (Remote Order Entry System)

Hawaii Photos Online

The ROES Client is an intuitive, refined application that runs on Windows, Linux, and Mac OS X. It offers the user the ability to select a lab defined product and precisely define crops and rotations on their images within that product. The user simply chooses a folder of images and starts selecting products in which to put them.

Once the desired crop is achieved, the item can be added to the current order, & a new product started. Multiple image thumbnails can be dragged or double-clicked to add several images to the order quickly.

Advanced features such as arbitrary rotation, auto rotate, and fit are easily selectable in multiple ways, accommodating various studio work styles and equipment.

Holding crop, options, and quantity between images of the same size allow studios to quickly process sets of similar images.

The client interface offers flexibility in work methods, allowing print sizes to be selected from a hierarchical menu or tabs, and the common tools to be shown at one time or associated with their related options.

Setting up an account to use ROES is very simple. If you already have a Photo Finishing account with FUJIFILM Hawaii, Inc., you are almost ready to use ROES.

Just make sure you have the following requirements covered:

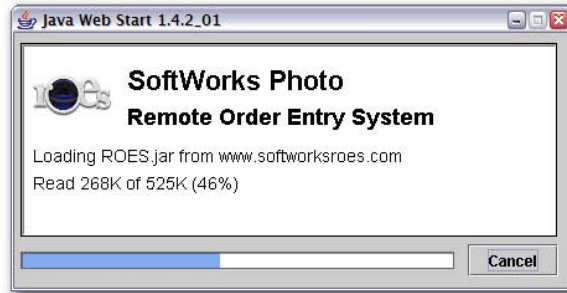
- Computer (running Windows, Linux or Mac OS X)
- High speed internet connection (DSL or Cable)
- Java (get it here free, [www.java.com](http://www.java.com))

To launch ROES, you must visit

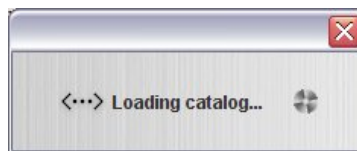
[www.hawaiiphotosonline.com](http://www.hawaiiphotosonline.com) to download

the ROES Java application. Click on the button in the middle of the page to load ROES. If you do not already have Java on your computer, you will be asked to install it. ROES runs on Java and will download the application next and install it.





After it is downloaded and installed, the product catalog will be downloaded and ROES will start.



The first time you use ROES, you will be asked to set up your account. Setting up the account is a simple process of completing the online form on the right. You will need your FUJIFILM Hawaii, Inc. **PHOTO FINISHING** account number to start using ROES. Fill in all the information then click OK. Now you're ready to use ROES. If at any time there is a change in the account information, you can go back to your information to update it.

**Enter Customer Information**

**Customer Information**

Please enter your customer information. This is necessary to complete orders.

**Name**

**Account No.**

**Email**

**Tax Exempt**  
 Tax Exempt

**Address**

**City**

**Province/State**

**Postal or Zip Code**

**Phone Number**

When ROES starts, the TIP OF THE DAY window will appear, with information about any updates to ROES, and/or our services and links to other information.

Now, you're ready to start ordering with ROES.



The services listed on ROES are also listed in your FUJIFILM Professional price list. Prices noted online are the same as those in the price list, and is subject to change without notice.

For photographers who need to use ROES at a remote location without internet access, ROES will work offline for 14 days, and will remember the last catalog downloaded as well as orders that you have created but not sent.

For more information about our services, please contact your Account Executive.